



PROFARM

PROfessional and personal empowerment in social FARMing

THEMATIC HANDOUT #3

PROFARM

The identification of the cases with the PROFARM model

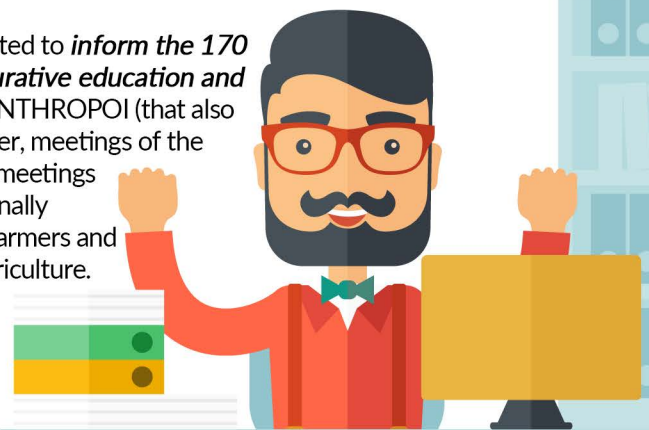
The 3rd thematic handout of the PROFARM project is about the selection of cases to be used as pilots within the project. The following text describes how this identification of students has taken place in the three countries involved. The starting point and the frame for the selection process have been different in the three countries – in Germany, there are already several recognized procedures for inclusion in integration assistance programs that are used obligatory by the institutions.

THE STRATEGY BEING FOLLOWED TO IDENTIFY 30 CASES IN EACH COUNTRY

In the Umbria region (Italy) several *face-to-face meetings were arranged with the schools* that declared themselves interested in taking part to the project. Out of all these meetings, 33 potential cases were identified. The potential cases feature different types of disabilities and students that come from schools located in different territorial areas of the region: Foligno, Spoleto, Gubbio and Todi. The experimentation will allow an *examination of the learning path started at school* and the exploitation of the knowledge already acquired in gardens, greenhouses and vegetable gardens. Most of the students are interested in taking care of the green areas of the school.

The Dutch partners wrote a project plan for the ProFarm pilot in 'Het Vechtdal' in order to elaborate a *detailed description about the schedule and which activities the students are doing on the farm*. For selecting the cases for the ProFarm pilot, several people internally (in the school) and externally (stakeholders like the local government/municipalities, health care sector and social farmers) were included. The internally selected cases of students with a disability did not contain examples from social farmers, but cases from the municipalities and health care sector. At the school the *teacher, coach, care-coordinator, parents and the manager were involved in the recruitment and selection process*. The information received from those people was collected and used by the directing group who went on with the selection process.

The German partners first started to *inform the 170 member organizations for curative education and social therapy* belonging to ANTHROPOI (that also include schools) via a newsletter, meetings of the Labour Unit, and by specialist meetings for schools, farmers and personally invited individuals, especially farmers and social therapists working in agriculture. Additionally 30 - 40 direct contacts with stakeholders who work with the relevant group of persons were dealt with and also the responsible department of the employment agency. *The vast majority of the potential 30 cases are mentally handicapped people of both sexes between the ages of 16 and 21 years.*



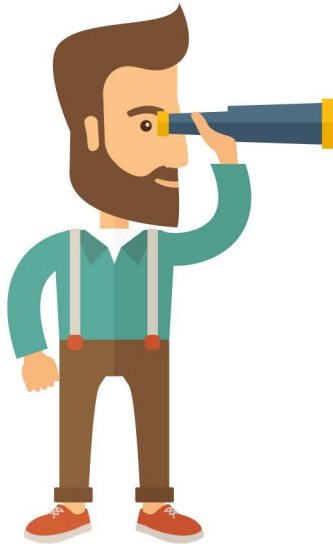


PROFARM

PROfessional and personal empowerment in social FARMing

THEMATIC HANDOUT #3

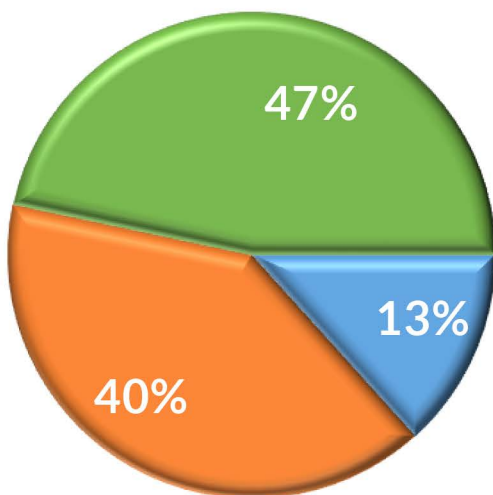
SELECTION OF AT LEAST TEN CASES THAT WILL TAKE PART IN THE EXPERIMENTATION



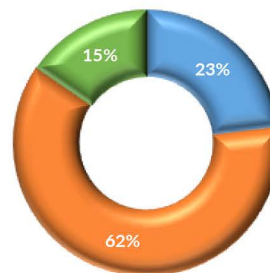
The process of selecting of at least 10 cases that will join the experimentation has been similar in the three countries. The “matrix” included in the Del. 2.3 “Toolkit for the skills assessment of young people with special needs” was meant for the assessment of the potential beneficiaries. Taking into consideration the aspirations of the students as well as the capabilities of the farms involved, the selection process started in a multidimensional framework. **Work-based learning is planned to start in March** and in some regional areas all the experimentations have been fully planned. The selected students shows a wide range of different disabilities and limitations, but also abilities that will be the starting point for a fruitful training experiment. Students with mental health problems are most prominent, as is the case in each of the countries, while physical limitations only restrict some of the youngsters. Some show weaknesses in their social behavior and the aim will be to improve their social skills. **The level of motivation for work and training differs within the range of youngsters as well as the pupils home**

AGE OF THE USERS SELECTED FOR THE EXPERIMENTATION

■ 13 ■ 18-21 ■ OVER 23

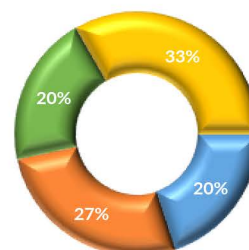


CASES WITH PHYSICAL LIMITATIONS



- Physical limitations that effect performance
- No physical limitations
- Physical limitations that do not affect school performance

CASES WITH MENTAL HEALTH PROBLEMS



- With no mental health issues
- Mental health issues that do not affect performance
- Mental health issues that affect performance, but can indicate if assistance is needed
- Mental health issues that effect performance